



# Roxtec CF 16 transit

Transit with a low profile metal frame design.

The Roxtec CF 16 is a low profile cable entry seal for enclosures. The transit is available in powder coated mild steel or stainless steel as well as in openable versions. The stainless steel version is rated to IP 69K.



- Light-weight
- Area efficient
- Allows pre-terminated cables

## Product characteristics



IP/UL NEMA

## Structure of installation



Cabinets & enclosures

## Mounting type



Bolting

## Ratings & certificates

### Tightness

- IP 66/67, IP 69K, UL/NEMA 4,4X,12,13

## Frame dimensions

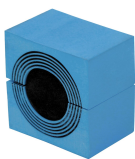
mm/kg

The frame variants below are a limited selection. For the full range of frames and configurations, please visit [roxtec.com](https://www.roxtec.com).

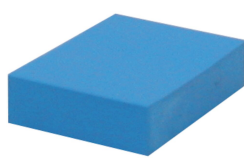
Product	Frame openings	Packing space	External dimensions WxHxD	Aperture dimensions w x h	Weight	Art. no
CF 16	1	40 x 160	93 x 234 x 42	71(+1/-1) x 187(+2/-0.5)	1.4	CSF0000160010
CF 16 AISI304	1	40 x 160	93 x 234 x 42	71(+1/-1) x 187(+2/-0.5)	1.4	ECF0001600021
CF 16 AISI304 OPEN	1	40 x 160	93 x 234 x 42	71(+1/-1) x 187(+2/-0.5)	1.2	5CF0000004946
CF 16 OPEN	1	40 x 160	93 x 234 x 42	71(+1/-1) x 187(+2/-0.5)	1.4	CSF1000160010

## Sealing components

### Sealing components



CM module with Multidiameter™



CM solid compensation module

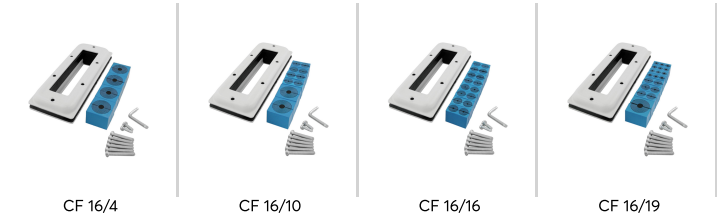


Lubricant

For detailed information, please visit [roxtec.com](https://www.roxtec.com).

# Pre-configured transit kits

mm/kg



Product	Configuration	External dimensions WxHxD	Aperture dimensions w x h	Weight	Art. no
CF 16/4	4x (9.5-32.5)	93 x 234 x 42	71(-2) x 187	1.7	CKT0008020004
CF 16/10	2x (9.5-32.5), 8x (3.5-16.5)	93 x 234 x 42	71(-2) x 187	1.7	CKT0008020010
CF 16/16	16x (3.5-16.5)	93 x 234 x 42	71(-2) x 187	1.7	CKT0008020016
CF 16/19	1x (9.5-32.5), 6x (3.5-16.5), 12x (3.5-10.5)	93 x 234 x 42	71(-2) x 187	1.7	CKT0008020119

The product information provided by Roxtec does not release the purchaser of the Roxtec system, or part thereof, from the obligation to independently determine the suitability of the products for the intended process, installation and/or use.

Roxtec gives no guarantee for the Roxtec system or any part thereof and assumes no liability for any loss or damage whatsoever, whether direct, indirect, consequential, loss of profit or otherwise, occurred or caused by the Roxtec systems or installations containing components not manufactured by an authorized manufacturer and/or occurred or caused by the use of the Roxtec system in a manner or for an application other than for which the Roxtec system was designed or intended.

Roxtec expressly excludes any implied warranties of merchantability and fitness for a particular purpose and all other express or implied representations and warranties provided by statute or common law. User determines suitability of the Roxtec system for intended use and assumes all risk and liability in connection therewith. In no event shall Roxtec be liable for indirect, consequential, punitive, special, exemplary or incidental damages or losses.

The Roxtec products are offered and sold in accordance with the conditions of the Roxtec General Terms of Sales. The latest version of the Roxtec General Terms of Sales can be downloaded from <https://www.roxtec.com/en/about-us/about-roxtec/general-terms-of-sales/>

We reserve the right to make changes to the product and technical information without further notice. Any errors in print or entry are no claims for indemnity. The content of this publication is the property of Roxtec International AB and is protected by copyright.

This document was generated on: 2024-05-03